

Program

3rd International Conference on

CELL & EXPERIMENTAL BIOLOGY

April 18-20, 2022 | Hybrid

In-Person

 **University Room**
Four Points by Sheraton Boston- Newton
320 Washington St, Newton, MA 02458, USA

Virtual

 **Eastern Time (US & Canada)**

All session times are Eastern Time (US & Canada)

Monday, April 18 (Fully Virtual)	Tuesday, April 19 (In-person & Virtual)	Wednesday, April 20 (In-person & Virtual)
05.55-06.00 Opening Remarks	08.10-08.20 Opening Remarks	08.20-11.15 Cellular and Molecular Neurobiology
06.00-08.35 Cellular and Molecular Neurobiology	08.20-10.25 Biochemistry and Molecular Biology	11.30-12.30 Cell and Developmental Biology
08.40-11.40 Keynote Session	10.45-11.45 Keynote Session	12.30-14.40 Experimental Biology and Disease Physiology
11.50-19.40 Parallel Session - 1 Biochemistry and Molecular Biology	11.45-14.40 Cell Signaling & Cancer Biology	14.40-15.55 and 18.00-19.40 Cell and Developmental Biology
11.40-20.20 Parallel Session - 2 Cell Signaling & Cancer Biology	14.40-17.00 Cell and Gene Therapy	15.55-18.00 Experimental Biology and Disease Physiology
	17.00-17.30 Poster Presentations	19.40-20.00 Poster Presentations

Day-2 | April 19, 2022

- 10.25-10.45 Coffee Chats
- 13.05-13.40 Lunch
- 17.30-18.30 Drinks and Networking

Day-3 | April 20, 2022

- 11.15-11.30 Coffee Chats
- 13.05-14.00 Lunch

 Virtual  In-person

Important Information

All speakers registered for CEB-2022 will receive a panelist Zoom webinar email (dated April 8, 2022) which will contain a link to join the meeting. A reminder will be sent to all speakers 1 hour and 1 day before the conference start time. If not, please email to - organizer@cebconference.com

During the conference days (April 18-20), please open the email & "Click Here to Join" link to join the live sessions in main meeting room.

Please note that your panelist link is unique to you and should not be shared with anyone else.

A separate meeting link will be sent to all the speakers for Parallel Session-2 on Day-1 (i.e., Cell Signaling and Cancer Biology). This link will be active from 11.30-20.30 Eastern time on April 18th. Thank you.

05:55-06:00: Opening Remarks

Day 1, Time: 06.00-08.35

Chair: Martin Berghoff (06.00-08.35)

06.00-06.20 Virtual



Fuminori Tsuruta, Ph.D.
*Faculty of Life and Environmental Sciences,
University of Tsukuba, Japan*

Propagation of Neuronal Micronuclei Regulates Microglial Diversity

06.20-06.35 Virtual



Jungjoo Park, Ph.D.
*Korea Advanced Institute of Science and
Technology, South Korea*

Microglial MERTK Eliminates Phosphatidylserine-Displaying Inhibitory Post-synapses

06.35-06.55 Virtual



Ranjithkumar Rajendran, Ph.D.
*Experimental Neurology, Department of
Neurology, Justus-Liebig University, Germany*

Role of FGF/FGFR Signalling in a Disease Model of Multiple Sclerosis

06.55-07.15 Virtual



Mária Bagyánszki, Ph.D.
*Associate Professor, University of Szeged,
Hungary*

Intestinal Region-dependent Alterations of Toll-like Receptor 4 Expression in Myenteric Neurons of Type 1 Diabetic Rats

07.15-07.35 Virtual



Andrea Stocco, Ph.D.
*Research Fellow, Department of
Translational Research and Department
of New Surgical and Medical Technologies,
University of Pisa, Italy*

Role of Mitochondrial Epigenetic Mechanisms in Neurodegenerative Diseases

07.35-07.55 Virtual



Wanli Smith, M.D., Ph.D.
*Associate Professor, Director of Cellular
Neurobiology Laboratory, Department of
Psychiatry, Johns Hopkins University School
of Medicine, Baltimore, MD*

Inhibition of LRRK2 GTP Binding Activity Reduces Neuroinflammation

07.55-08.15 Virtual



David Van Vector, Ph.D.
*Professor of Cell Biology, Director, Biological
and Biomedical Sciences (BBS) Graduate
Program, Harvard Medical School, Boston, MA*

The Regulation of Synaptic Morphogenesis and Plasticity by microRNAs

08.15-08.35 Virtual



David Klyne, Ph.D.
*Research Fellow, NHMRC Centre of Clinical
Research Excellence in Spinal Pain, Injury and
Health, School of Health and Rehabilitation
Sciences, The University of Queensland, Australia*

Toward an Understanding of How Sleep and Physical Activity Influence Pain

8.35-8.40 Break

Day 1, Time: 08.40-11.40

Chair: Mogens H. Jensen (9.40-11.40)

08.40-09.10 Virtual

**Dietmar W. Hutmacher, Ph.D.**

Professor and Chair in Regenerative Medicine, Director ARC Centre in Additive Biomanufacturing, Queensland University of Technology, Australia

Tissue Engineering of Humanized Rodent Models for Cancer Research

09.10-09.40 Virtual

**Mogens H. Jensen, Ph.D.**

Professor of Complex Systems and Biophysics, Former President, Royal Danish Academy of Science and Letters, The Niels Bohr Institute, The University of Copenhagen, Denmark

Chaotic Dynamics of Transcription Factors in Gene Regulation

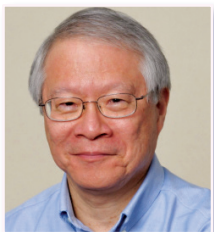
09.40-10.10 Virtual

**Nathan Nelson, Ph.D.**

Professor, Department of Biochemistry and Molecular Biology, The George S. Wise Faculty of Life Sciences, Tel Aviv University, Israel

A Requiem for Crystal Structures of Large Photosynthetic Membrane Complexes and the New Era of Cryo-EM

10.10-10.40 Virtual

**Kenneth M. Yamada, M.D., Ph.D.**

NIH Distinguished Investigator Chief, Cell Biology Section, NIDCR NIH, Bethesda, MD

Dynamic Cell Interactions with Extracellular Matrix in Cell Migration, Invasion, and Morphogenesis

10.40-11.10 Virtual

**James R. Lupski, M.D., Ph.D.**

The Cullen Endowed Chair of Genetics and Genomics, Member, Human Genome Sequencing Center (HGSC), Baylor College of Medicine, Houston, TX

Biology in Balance: Human Diploid Genome Integrity, Gene Dosage & Genomic Medicine

11.10-11.40 Virtual

**Michael Snyder, Ph.D.**

Director, Center for Genomics and Personalized Medicine, Professor of Genetics, Stanford School of Medicine, Stanford University, CA

Big Data and Health

11.40-11.50 Break

Parallel Session 1

Day 1, Time: 11.50-19.40

Chairs: Jun Huang (11.50-13.50)
Remi Peyronnet (13.50-15.40)
Ling Yang (15.50-17.50)
Wanli Smith (17.50-19.40)

11.50-12.10 Virtual



Yaron Vinik, Ph.D.
*Department of Molecular Cell Biology,
Weizmann Institute of Science, Israel*

Predicting Breast Cancer Progression, Recurrence and Treatment Response by Proteomic Analysis of Circulating Extracellular Vesicles

12.10-12.30 Virtual



Nina Reuven, Ph.D.
*Department of Molecular Genetics,
Weizmann Institute of Science, Israel*

Scarless CRISPR/Cas9 Edited Cells Based on Co-editing Selection

12.30-12.50 Virtual



Doron Lancet, Ph.D.
*Professor, Department of Molecular Genetics
Weizmann Institute of Science, Israel*

Life Originated with Micellar Lipid-based Epigenetic Inheritance

12.50-13.10 Virtual



Phillip Andrews, Ph.D.
*Laboratory Director,
Avalon Laboratories Inc., Canada*

Role of Histone Acetyltransferase Complexes in Promoting C-myc-Pygo2 Complex Formation

13.10-13.30 Virtual



Joachim E. Schultz, Ph.D.
*Professor, Pharmazeutisches Institut der
Universitat Tübingen, Germany*

New Modes of Regulation of Mammalian Adenylyl Cyclases

13.30-13.50 Virtual



Remi Peyronnet, Ph.D.
*Institute for Experimental Cardiovascular
Medicine, University Heart Center Freiburg ·
Bad Krozingen, and Faculty of Medicine,
University of Freiburg, Germany*

Piezo1 Channels Regulate Atrial Fibroblast Mechanics and Matrix Stiffness Sensing

13.50-14.05 Virtual



Mirjam Arnold
*Max Planck Institute for Molecular Genetics,
Otto Warburg Laboratory, Germany*

Uncovering the Roles of BET Family Proteins in Transcription Regulation

14.05-14.20 Virtual



Roman Sidorov, Ph.D.
*Institute of Ecology and Genetics of
Microorganisms, Perm Federal Research
Center, the Ural Branch of Russian Academy
of Sciences, Russian Federation*

Erogorgiaene Analog Inhibits (p)ppGpp Synthetases Preventing Persister Formation in Mycobacteria

14.20-14.40 Virtual



Natalie Krahn, Ph.D.
*Department of Molecular Biophysics and
Biochemistry, Yale University, New Haven, CT*

Versatile and Tunable Selenocysteine Reporters Using an Intein-Based Design

14.40-15.00 Virtual



Federica Morani, Ph.D.
*Genetics, Department of Biology,
University of Pisa, Italy*

Identification of Overexpressed Genes in Malignant Pleural Mesothelioma as Potential Targets for Novel Therapies

15.00-15.20 Virtual



Marcel Zamocky, Ph.D.
*Department of Chemistry, University of
Natural Resources and Life Sciences, Vienna,
Austria; Institute of Molecular Biology, Slovak
Academy of Sciences, Bratislava, Slovakia*

Uncovering the Peculiar Evolution of Thyroid Peroxidases and their Ancestors from Non-Vertebrates Towards Mammals with Consequences for Thyroid Hormone Biosynthesis

15.20-15.40 Virtual



Heinrich K. Wasner, Ph.D.
*BioReg Biopharm, Technology Innovation
Laboratory, University of Illinois at Chicago, IL*

The Natural Cyclic AMP Antagonist, Prostaglandylinositol Cyclic Phosphate: Isolation, Chemical Structure, Biosynthesis and Way of Action

15.40-15.50 Break

15.50-16.10 Virtual



Juan Fuxman Bass, Ph.D.
*Assistant Professor, Boston University,
Biology Department, Boston, MA*

Widespread Mutation of ETS Binding Sites in Cancer

16.10-16.30 Virtual



Xiang-Dong "David" Zhang, Ph.D.
*Assistant Professor, Department of Biology
SUNY Buffalo State, Buffalo, NY*

Polymeric SUMO-2/3 Chain Modification Regulates Chromosome Alignment to the Metaphase Plate During Mitosis in Mammalian Cells

16.30-16.50 Virtual



Ivan T. Rebutini, Ph.D.
*Staff Scientist, Section on Protein Structure
and Function, Laboratory of Retinal Cell and
Molecular Biology, National Eye Institute,
NEI-NIH, Bethesda, MD*

Pigment Epithelium-derived Factor Induces CRX Alterations in the Mouse Retina

16.50-17.10 Virtual



Pinelopi P. Kapitsinou, M.D.
*Associate Professor of Medicine, Division of
Nephrology, Feinberg School of Medicine,
Northwestern University, Chicago, IL*

Hypoxic Preconditioning Protects Against Acute Kidney Injury Through Tryptophan Metabolism

17.10-17.30 Virtual



Carlo Vascotto, Ph.D.
*Assistant Professor, Department of Medicine,
University of Udine, Italy*

New Role of Apurinic/apyrimidinic Endonuclease 1 Protein in the Degradation of Dysfunctional Abasic mRNA in Mitochondria

17.30-17.50 Virtual



Seung-Hyun Ro, Ph.D.
*Assistant Professor, Department of
Biochemistry, University of Nebraska-
Lincoln, NE*

Arsenic Toxicity on Metabolism and Autophagy in Brown Adipose Tissue

17.50-18.10 Virtual



Sidney Hecht, Ph.D.
*Director, Bidesign Center for BioEnergetics,
Professor, School of Molecular Sciences,
Arizona State University, Tempe, AZ*

Expansion of the Genetic Code Through the Use of Modified Ribosomes

18.10-18.25 Virtual



Xing Liu, Ph.D.
Boston University, MA

Systematic Study of Host Network Perturbations by Human Virus Transcriptional Regulators

18.25-18.40 Virtual



Jian Li, Ph.D.
*Aging and Metabolism Research Program,
Oklahoma Medical Research Foundation,
Oklahoma City, OK*

Regulation of Germline Proteostasis by HSF1 and Insulin/IGF-1 Signaling in Gametogenesis and Reproductive Aging

18.40-18.55 Virtual



Dimitra Apostolidou
*Department of Mechanical Engineering and
Materials Science, Duke University, Durham, NC*

Folding and Misfolding of Highly-Luminescent Protein NanoLuc

18.55-19.10 Virtual



Thuy Nguyen, Ph.D.
*Animal Metabolomics Lab, Department of
Animal Science, Chonnam National University,
Republic of Korea*

Impairment of ULK1 Sulphydration-Mediated Lipophagy by SREBP-1c in Hepatic Steatosis

19.10-19.25 Virtual



Xiaofan Wei, M.S.
*Department of Biomedical Science &
Engineering, GIST Gwangju Institute of
Science & Technology, South Korea*

PEX16 Maintains Peroxisome Abundance via Pexophagy Regulation

19.25-19.40 Virtual



Jiakuo Yu, Ph.D.
*Professor and Director at Peking University
Third Hospital, China*

The Research and Application Prospects of Sports Injury Therapy Based on Peripheral Blood-Derived Mesenchymal Stem Cells

End of Parallel Session -1

Parallel Session 2

Day 1, Time: 11.40-20.20

Chairs: **Sebastian Oltean** (11.40-14.40)
Zhen Lu (15.50-17.50)
Jianming Xu (18.00-20.20)

11.40-12.00 Virtual



Manuela Sollazzot, Ph.D.
Department of Pharmacy and Biotechnology (FABIT), University of Bologna, Italy

Potential Survival Responses Triggered by Respiratory Complex I Inhibition in Ovarian Cancer Models

12.00-12.20 Virtual



Monica De Luise, Ph.D.
Department of Medical and Surgical Sciences (DIMEC); Center for Applied Biomedical Research (CRBA), University of Bologna, Italy

Altered Proteome S-glutathionylation in Cancer Caused by Loss of Glutaredoxin-2 Leads to Mitochondrial Dysfunction and Conversion to More Indolent Oncocytoma

12.20-12.40 Virtual



Karin Pfisterer, Ph.D.
Senior Scientist, Department of Dermatology, Medical University of Vienna, Austria

The Extracellular Matrix in Skin Inflammation and Cancer

12.40-13.00 Virtual



Mirela Sedic, Ph.D.
Centre for Applied Bioanthropology, Institute for Anthropological Research, Croatia

The Sphingosine Kinase 2 Inhibitor ABC294640 Restores the Sensitivity of BRAFV600E Mutant Colon Cancer Cells to Vemurafenib by Reducing AKT-Mediated Expression of Nucleophosmin and Translationally-Controlled Tumour Protein

13.00-13.20 Virtual



Simona Fontana, Ph.D.
Associate Professor of Applied Biology, Dept of Biomedicine, Neurosciences and Advanced Diagnostics (Bi.N.D), School of Medicine - University of Palermo, Italy

Protein Cargo of Salivary Small Extracellular Vesicles as Potential Functional Signature of Oral Squamous Cell Carcinoma

13.20-13.40 Virtual



Kathrin Renner, Ph.D.
Internal Medicine III, University Hospital Regensburg, Germany

Glucose Metabolism, a Metabolic Checkpoint in the Tumor Microenvironment

13.40-14.00 Virtual



Sang-Oh Yoon, Ph.D.
Assistant Professor, College of Medicine, University of Illinois at Chicago, IL

Inhibition of Mammalian Target of Rapamycin Induces Insulin-Like Growth Factor Receptor-Mediated Cell Survival Signaling Through Positive Control of Protein Synthesis

14.00-14.20 Virtual



Zhen Lu, M.D.
Associate Professor, The University of Texas MD Anderson Cancer Center, Houston, TX

SIK2 Inhibition Synergistically Enhances PARP Inhibitor Activity in Ovarian and Triple Negative Breast Cancers

14.20-14.40 Virtual



Neil A. Bhowmick, Ph.D.
Professor, Department of Medicine, Director, Cancer Biology Program, Cedars-Sinai Medical Center, Los Angeles, CA

Targeting Circulating Tumor-derived Mitochondrial DNA Confers Chemotherapy Sensitivity

14.40-14.50 Break

14.50-15.10 Virtual



John Di Guglielmo, Ph.D.
Associate Professor, Western University, Canada

The Role of Autophagy in TGF β -dependent Tumorigenesis

15.10-15.30 Virtual



Andrei V. Bakin, Ph.D.
Associate Professor of Oncology, Department of Cancer Genetics and Genomics, Roswell Park Comprehensive Cancer Center, Buffalo, NY

New Therapeutic Strategies Targeting P53-deficient Cancer

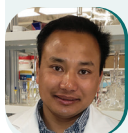
15.30-15.50 Virtual



Devanand Sarkar, Ph.D.
Professor, Department of Human and Molecular Genetics, Associate Director of Training and Education, Massey Cancer Center, Virginia Commonwealth University, Richmond, VA

Co-amplified Genes Cooperate to Promote Cancer

15.50-16.10 Virtual



Thang Van Nguyen, Ph.D.
Assistant Research Professor, Center for Precision Medicine, Department of Medicine, University of Missouri, Columbia, MO

USP15 Antagonizes CRL4CRBN-mediated Ubiquitylation of Glutamine Synthetase and Neo-substrates

16.10-16.30 Virtual



Colleen M. Cebulla, M.D., Ph.D.
Associate Professor, Department of Ophthalmology and Visual Sciences, Havener Eye Institute, The Ohio State University Wexner Medical Center, Columbus, OH

TMEM97 Ablation Aggravates Oxidant-induced Retinal Degeneration

16.30-16.50 Virtual



Leslie I. Gold, Ph.D.
Associate Professor, Departments of Medicine and Pathology, Division of Translational Medicine, New York University School of Medicine, New York, NY

Stabilizing Nuclear p27kip1 with Small Molecule Inhibitors of the SCF-Skp2-Cks1 Ubiquitin E3 Ligase Complex as a Cytostatic Therapeutic Approach to Cancer

16.50-17.10 Virtual



Jianming Xu, Ph.D.
Gordon Cain Professor, Department of Molecular and Cellular Biology, Baylor College of Medicine, Houston, TX

The Roles and Transcriptional Mechanisms of TWIST1-regulated Genes in Cancer Cells

17.10-17.30 Virtual



Anna M. Eiring, Ph.D.
Assistant Professor, Department of Molecular and Translational Medicine, Texas Tech University Health Sciences Center at El Paso, TX

A Role for Proteasome 26S Subunit, Non-ATPase 3 (PSMD3), in Disease Progression and Drug Resistance of Myeloid Leukemia

17.30-18.00 Break

18.00-18.20 Virtual



Benny Abraham Kaiparettu, Ph.D.
Associate Professor, Department of Molecular and Human Genetics, Baylor College of Medicine, Houston, TX

Mitochondrial Energy Reprogramming in Triple Negative Breast Cancer

18.20-18.40 Virtual



Ginette Santiago-Sanchez, Ph.D.
Laboratory of Tumor Immunology and Biology, Center for Cancer Research, NCI, NIH, Bethesda, MD

Targeting Lipocalin-2 in Inflammatory Breast Cancer Cells with Small Interference RNA and Small Molecule Inhibitors

18.40-18.55 Virtual



Theophilos Tzaridis, M.D.
Tumor Initiation & Maintenance Program, Sanford Burnham Prebys Medical Discovery Institute, La Jolla, CA

Extracellular Vesicles as Promising Liquid Biopsy Tools for Clinical Routine in Glioblastoma

18.55-19.15 Virtual



Xiaotao Li, Ph.D.
Shanghai Key Laboratory of Regulatory Biology, Institute of Biomedical Sciences, School of Life Sciences, East China Normal University, China

The REG γ Inhibitor NIP30 Increases Sensitivity to Chemotherapy in p53-deficient Tumor Cells

19.15-19.35 Virtual



Jessica Buck, Ph.D.
Telethon Kids Cancer Centre, Telethon Kids Institute, Australia

Sensitization of Pediatric Brain Cancer to Radiotherapy by Inhibition of the DNA Damage Response Pathway

19.35-19.50 Virtual



Danna Yeerken, Ph.D.
Key Laboratory of Carcinogenesis and Translational Research, Laboratory of Molecular Oncology, Peking University Cancer Hospital & Institute, P. R. China

Nlp Promotes Autophagy Through Facilitating the Interaction of Rab7 and FYCO1

19.50-20.05 Virtual



Rulu Pan
School of Basic Medical Sciences, Wenzhou Medical University, P. R. China

Epigenetic Induction of Lipocalin 2 Expression Drives Acquired Resistance to 5-fluorouracil in Colorectal Cancer Through Integrin beta3/SRC Pathway

20.05-20.20 Virtual



Bhavya Thakur
Department of Biomedical Engineering Indian Institute of Technology Ropar, India

Imidazo[1,2-a]pyridine Derivatives as Novel Anti-cancer Agent Against Non-small Cell Lung Cancer by Activating NOX Mediated Oxidative Stress

End of Parallel Session -2

08.10-08.20: Opening Remarks

Day 2, Time: 08.20-10.25

Chair: Luigi Puglielli (08.20-10.25)

08.20-08.40 In-Person



Philip Penketh, Ph.D.
Professor Emeritus, Department of
Pharmacology, Yale University, New Haven, CT

Presumptive Phosphologic Circuits in DNA Repair and Rapid Cellular Data Processing

08.40-09.00 In-Person



Ling Yang, Ph.D.
Assistant Professor, Department of Medical
Genetics and Molecular Biochemistry,
Lewis Katz School of Medicine at Temple
University, Philadelphia, PA

Regulation of Energy Metabolism by Long Non-coding RNAs in the Liver

09.00-09.20 In-Person



Stéphane Sebillé, Ph.D.
Associate Professor, Lipotoxicity and
Channelopathies, Laboratory of Physiopathology
and Regulation of Ionic Channels, University of
Poitiers, France

Polyunsaturated Phospholipids Increase Cell Resilience to Mechanical Constraints

09.20-09.40 In-Person



Anthony D. Ho, M.D., Ph.D.
Professor & Chair Emeritus, Dept. of
Medicine V, Heidelberg University, Germany

Functional Decline, Senescence of Hematopoietic Stem Cell Compartment and Elevated Central Carbon Metabolism

09.40-09.55 In-Person



Karl Barber, Ph.D.
Elledge Laboratory, Division of Genetics,
Brigham & Women's Hospital, Harvard
Medical School, Boston, MA

CRISPR-based Peptide Library Display and DNA-templated Peptide Microarray Self-assembly for Quantitative Protein Binding Assays

09.55-10.10 In-Person



Sheyda Najafi
Department of Pharmaceutical Sciences,
College of Pharmacy and Health Sciences, St.
John's University, Queens, NY

Small Molecule, Novel Benzimidazole Derivatives Closely Mimic the Biochemical and Functional Activity of BMPs

10.10-10.25 In-Person



Nan Jiang, Ph.D.
Department of Biochemistry and
Molecular Biology, Michigan State University,
East Lansing, MI

Synergy between the Anthocyanin and tasiRNA Pathways Expose Hidden Features of Arabidopsis Carbon Metabolism

10.25-10.45 Coffee Chats

Day 2, Time: 10.45-11.45

Chair: Luigi Puglielli (10.45-11.45)

10.45-11.15 In-Person



Jenny Hinshaw, Ph.D.

MICEF Director, Laboratory of Cell and Molecular Biology, National Institute of Diabetes and Digestive and Kidney Diseases, NIH, Bethesda, MD

Dynamins Mediating Membrane Fission and Fusion

11.15-11.45 Virtual



Rama Natarajan, Ph.D., FAHA, FASN

Chair, Department of Diabetes Complications and Metabolism, Deputy Director, Arthur Riggs Diabetes & Metabolism Res. Institute, Beckman Res. Institute of City of Hope, Duarte, CA

Epigenetics and Noncoding RNAs in Diabetic Complications and Metabolic Memory

Day 2, Time: 11.45-14.40

Chair: **Stéphane Seille** (11.45-13.05)

11.45-12.05 Virtual



M. Cecilia Caino, Ph.D.
Assistant Professor, Department of
Pharmacology, University of Colorado
Anschutz, Aurora, CO

Mitochondria Engages the Integrated Stress Response to Sustain Prostate Cancer Growth

12.05-12.25 In-Person



Ramiro Iglesias-Bartolome, Ph.D.
NIH Stadtman Investigator, LCMB, Center for
Cancer Research NCI, NIH, Bethesda, MD

YAP1/TAZ-TEAD Transcription in Skin Homeostasis and Cancer

12.25-12.45 In-Person



Bing He, Ph.D.
Protein Section, Laboratory of Metabolism,
Center for Cancer Research, NCI, NIH,
Bethesda, MD

Epigenetic Regulation of Cell Identity Through HMGN Proteins

12.45-13.05 In-Person



Kanita A. Chaudhry, Ph.D.
Roswell Park Comprehensive Cancer Center,
Buffalo, NY

The Aryl Hydrocarbon Receptor (AhR) Regulates Neuroblastoma Differentiation

13.05-13.40 Lunch and Networking

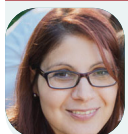
13.40-14.00 Virtual



Sebastian Oltean, M.D., Ph.D.
Associate Professor in Experimental Medicine
and Therapeutics, Institute of Biomedical &
Clinical Sciences, University of Exeter Medical
School, UK

Novel Compounds with Dual Action (Modulation of Alternative Splicing and Epithelial-Mesenchymal Transitions) as New Therapeutics in Prostate Cancer

14.00-14.20 Virtual



Anna Bianchi-Smiraglia, Ph.D.
Assistant Professor, Department of Cell Stress
Biology, Roswell Park Comprehensive Cancer
Center, Buffalo, NY

GTP Metabolic Enzymes in Control of Cancer Progression

14.20-14.40 Virtual



Haitao Wen, Ph.D.
Associate Professor, Department of Microbial
Infection and Immunity, Ohio State University
College of Medicine, Columbus, OH

Ancient and Modern Role of Mitochondrial Calcium Signaling

Day 2, Time: 14.40-17.00

Chair: **Susanna Rosi** (14.40-17.00)

14.40-15.00 **In-Person**



Daniel Lu, Ph.D.

Scientist – Genome Analysis Unit,
Therapeutic Discovery, Amgen Global
Research, South San Francisco, CA

Single-cell Transcriptomics Reveal the Impact of Phagocytosis
for Myeloid Therapeutic Targeting

15.00-15.20 **In-Person**



Hing Wong, Ph.D.

CEO & Founder, HCW Biologics Inc.,
Miramar, FL

Bifunctional Immunotherapeutic HCW9218 for Cancer and
Inflammation

15.20-15.40 **In-Person**



Anna Engler, Ph.D.

Pulmonary Drug Discovery Lab,
Pharmaceuticals, Research &
Development, Bayer US LLC, Boston, MA

In Vitro Injury Models of Human Alveolar Type-2 Organoid
Cultures for Drug-Target Validation and Discovery

15.40-16.00 **In-Person**



Garrett R. Rettig, Ph.D.

Integrated DNA Technologies, Inc.,
Coralville, IA

Improved Methods and Optimized Design for CRISPR Cas9 and
Cas12a Homology-directed Repair

16.00-16.20 **Virtual**



Peter J. Turnbaugh, Ph.D.

Professor, Department of Microbiology
& Immunology, University of California,
San Francisco, CA

Editing the Human Gut Microbiome to Improve Treatment
Outcomes

16.20-16.40 **Virtual**



Xin Ye, Ph.D.

Senior Scientist, Department of Discovery
Oncology, Genentech Inc., South San
Francisco, CA

TraCe-seq Decodes Transcriptional Mechanisms Underlying
Anti-cancer Drug Response Heterogeneity

16.40-17.00 **Virtual**



Madeleine Maker

Cellular Immunotherapy Center,
Department of Hematology and
Hematopoietic Cell Transplantation, City
of Hope, Duarte, CA

Targeting the TGF β Pathway to Enhance IL13Ra2-CAR T Cell
Therapy for Glioblastoma

- CEB-P1 **Andrea Paquola**
Randall Centre for Cell and Molecular Biophysics, King's College London, UK **Identification of Lipids Bound to Membrane-associated Cytokinesis Proteins**
- CEB-P2 **Arnaud Delafenetre**
University of Poitiers, France **Functional Characterization of Muscle Cells Derived from Healthy and DMD Human Induced Pluripotent Stem Cells**
- CEB-P3 **Charles-Albert Chapotte-Baldacci**
University of Poitiers, France **Fine Tuning of Calcium Constitutive Entry by Optogenetically-Controlled Membrane Polarization: Impact on Cell Migration**
- CEB-P4 **Rebecca Hirsch**
Department of Pathology and Laboratory Medicine, The University of North Carolina School of Medicine, Chapel Hill, NC **Developing Patient-specific CTNNB1 (β -catenin) Mutants for Defining the Role of CD73 in Endometrial Cancer Recurrence**
- CEB-P5 **Anna Berenson**
Boston University, USA **Comprehensive Mapping of Heterodimer-DNA Binding Using a Novel Yeast-based Method**
- CEB-P6 **Ananya Govindarajan**
Senior at Pawling High School, New York, NY **Behavioral Effects of Oxidant and Reduced Chemorepellents on Mutant and Wild-Type *Tetrahymena thermophila***

17.30-18.30 Drinks and Networking

End of Day-2

Day 3, Time: 08.20-11.15

Chair: Anthony D. Ho (08.20 - 11.15)

08.20-08.40 In-Person

**Bo Zhao, Ph.D.***Assistant Professor, Department of Otolaryngology Head & Neck Surgery, Indiana University School of Medicine, Indianapolis, IN*

Functions of Glutaredoxin Domain-containing Proteins in Hearing and Deafness

08.40-09.00 In-Person

**Xianhua Piao, M.D., Ph.D.***Benioff Professor in Children's Health, Director of the Newborn Brain Research Institute, Weill Institute for Neuroscience, University of California, San Francisco, CA*

GPCR-dependent Microglia Function in Development and Disease

09.00-09.20 In-Person

**Luigi Puglielli, M.D., Ph.D.***Professor, Department of Medicine, Waisman Center, University of Wisconsin-Madison, Madison, WI*

Lysine Acetylation Within the Lumen of the Endoplasmic Reticulum, Proteostasis, and Neurodevelopment

09.20-09.40 In-Person

**Susanna Rosi, Ph.D.***Lewis and Ruth Cozen Chair II, Weill Institute for Neurosciences, Departments of Physical Therapy Rehabilitation Science, Neurological Surgery, University of California San Francisco, CA*

Targeting the Integrated Stress Response to Reverse Memory Deficits

09.40-10.00 In-Person

**Brigitte Ciapa, Ph.D.***Paris-Saclay Institute of Neuroscience, CNRS, Université Paris-Sud, Université Paris-Saclay, France*

Expression of Presenilins: From the Sea Urchin Embryo to the Mouse Brain and Alzheimer's Disease

10.00-10.15 In-Person

**Elias Adriaenssens, Ph.D.***Department of Biomedical Sciences, University of Antwerp, Belgium*

A Weakened Interface in the P182L Variant of HSP27 Associated with Severe Charcot-Marie-Tooth Neuropathy Causes Aberrant Binding to Interacting Proteins

10.15-10.35 Virtual

**Marco Trizzino, Ph.D.***Assistant Professor, Department of Biochemistry and Molecular Biology, Thomas Jefferson University, Philadelphia, PA*

Inability to Switch from ARID1A-BAF to ARID1B-BAF Impairs Exit from Pluripotency and Commitment Towards Neural Crest Formation in ARID1B-related Neurodevelopmental Disorders

10.35-10.55 Virtual

**Kai-Christian Sonntag, M.D., Ph.D.***Assistant Professor of Psychiatry (Neuroscience), McLean Hospital, Harvard Medical School, Belmont, MA*

Developing the Induced Pluripotent Stem Cell (iPSC) Paradigm as a Personalized Medicine Approach for Late-onset Alzheimer's Disease

10.55-11.15 Virtual

**Mollie K. Meffert, M.D., Ph.D.***Associate Professor, Departments of Biological Chemistry and Neuroscience, Center for Cell Dynamics, Johns Hopkins University School of Medicine, Baltimore, MD*

Growth Regulatory miRNAs in Neurodevelopment and Plasticity

11.15-11.30 Coffee Chats

Cell and Developmental Biology

Day 3, Time: 11.30-13.05

Chair: **Xianhua Piao** (11.30-13.05)

11.30-11.50 **In-Person**



Hernando Lopez-Bertoni, Ph.D.
Assistant Professor, Hugo W. Moser
Research Institute at Kennedy Krieger,
Department of Neurology, Johns Hopkins
School of Medicine, Baltimore, MD

SOX2-mediated 5hmC dysregulation in GBM Stem Cells

11.50-12.10 **In-Person**



Sudhish Sharma, Ph.D.
Assistant Professor, Development Biology,
Division of Cardiovascular-Thoracic
Surgery, Ann & Robert H. Lurie Children's
Hospital of Chicago, IL

The Mechanism of Exosomes Mediated Restoration of Cardiac Function of Ischemic Myocardium

12.10-12.30 **Virtual**



ChangHwan Lee, Ph.D.
Assistant Professor, Department of
Biological Sciences, University at Albany,
SUNY, Albany, NY

Quantitative Understanding of Notch-dependent Transcriptional Dynamics *In Vivo*

Experimental Biology and Disease Physiology

12.30-12.50 **In-Person**



Muriel Lizé, Ph.D.
Associate Director, Head of In Vitro
Respiratory Research, Boehringer Ingelheim,
Germany

From Cilia Defects to Chronic Lung Diseases

12.50-13.05 **In-Person**



Stanislovas Jankauskas
Albert Einstein College of Medicine,
Department of Medicine, Division of
Cardiology, NY

Inositol Trisphosphate Receptors (IP3Rs) Regulate Mitophagy and Apoptosis in Pancreatic Beta-Cells

13.05 - Lunch and Networking

Day 3, Time: 13.30-18.00

Chair: **Linglin Xie** (13.30-18.00)

13.30-13.50 **Virtual**



Zhen Bouman Chen, Ph.D.
Associate Professor, Department of Diabetes
Complications and Metabolism, City of
Hope, Duarte, CA

Enhancer lncRNAs Regulate Endothelial Function in Health and Disease

13.50-14.10 **Virtual**



Stephan Lehnart, Ph.D.
Department of Cardiology & Pneumology,
Heart Research Center Göttingen,
University Medical Center Göttingen,
Germany

Junctophilin Proteins in Cellular Function and Disease Physiology

14.10-14.30 **Virtual**



Konrad Urbanek, Ph.D.
University of Naples Federico II, Naples, Italy

Glucocorticoid-Induced Leucine Zipper and the Failing Heart

14.30-14.40 Virtual



Iris Car
Centre for Applied Bioanthropology, Institute for Anthropological Research, Croatia

Integrated Proteomics and Bioinformatics Analysis Identifies Overexpression of Ezrin and Aberrant Regulation of Actin Cytoskeleton in Vemurafenib-resistant BRAFV600E Mutated Colon Cancer Cells

Cell and Developmental Biology

14.40-15.00 Virtual



Neda Bagheri, Ph.D.
Allen Institute for Cell Science, Seattle; Biology and Chemical Engineering, University of Washington, Seattle, WA

Agent-based Models Help Uncover Rules Driving Emergent Cell and Population Dynamics

15.00-15.20 Virtual



Abdel Halim Harrath, Ph.D.
Professor, Fetal Programming of Diseases Research Lab, College of Sciences, King Saud University, Saudi Arabia

Role of Autophagy in Regulation of Cell Survival/Cell Death in Ovarian Cell Cytotoxicity

15.20-15.40 Virtual



Lara López-González, Ph.D.
Department of Human Anatomy and Psychobiology, School of Medicine, University of Murcia, Spain

Tangential Intrahypothalamic Migration of the Mouse Ventral Premamillary Nucleus

15.40-15.55 Virtual



Olivier Theodoly, Ph.D.
Research Director at CNRS, Head of Laboratory Adhesion & Inflammation, INSERM, Aix Marseille University, France

The Strange Cases of Lymphocytes Migration and Adhesion: Swimming and Reverse Haptotaxis

Experimental Biology and Disease Physiology

15.55-16.15 Virtual



Seraina Domenig
Laboratory of Regenerative and Movement Biology, Department of Health Sciences and Technology, Swiss Federal Institute of Technology (ETH) Zurich, Switzerland

CRISPR/Cas9 Editing of Directly Reprogrammed Myogenic Progenitors Restores Dystrophin Expression in a Mouse Model of Muscular Dystrophy

16.15-16.35 Virtual



Linglin Xie, Ph.D.
Department of Nutrition, Texas A&M University, College Station, TX

Macrophage Osr1-PPAR γ Regulation Plays an Essential Role in Liver Inflammation of NASH

16.35 - 16.45 Break

16.45-17.05 Virtual



Karen Usdin, Ph.D.
Chief, Gene Structure and Disease Section, Deputy Chief, Laboratory of Cell and Molecular Biology, NIDDK, National Institutes of Health, Bethesda MD

DNA Repair Gone Bad: The Mechanism of Repeat Expansion in the Fragile X-related Disorders

17.05-17.20 Virtual



Matthew C. Madison, Ph.D.
Division of Pulmonary, Allergy, and Critical Care Medicine, University of Alabama at Birmingham, AL

The Pathogenic Role of PMN Exosomes in Inflammatory Lung Disease

17.20-17.40 Virtual



Jenny Gunton, Ph.D.
Head, Centre for Diabetes, Obesity and
Endocrinology Research (CDOER), The
University of Sydney, Australia

HIFs (Hypoxia Inducible Factors) and the Liver

17.40-18.00 Virtual



Jui-Hsia Weng, Ph.D.
Institute of Biological Chemistry,
Academia Sinica, Taiwan

The Secret Life of your Old Friend: Drugging Intercellular
Communication Against Inflammation

Cell and Developmental Biology

Day 3, Time: 18.00-20.00

Chair: Lan Guan (18.00-20.00)

18.00-18.20 Virtual



Giselle Yeo, Ph.D.
Charles Perkins Centre, School of Life and
Environmental Sciences, The University of
Sydney, Australia

Extracellular Matrix Modulation of Mesenchymal Stem Cell
Behaviour

18.20-18.40 Virtual



Katrin J. Svensson, Ph.D.
Assistant Professor, Department of
Pathology, Stanford School of Medicine,
Stanford University, CA

Extracellular Regulators of Physiology and Metabolism

18.40-19.00 Virtual



Francesca Storici, Ph.D.
GRA Distinguished Cancer Scientist,
Professor, School of Biological Sciences,
Georgia Institute of Technology, Atlanta, GA

Features and Patterns of Ribonucleotides Embedded in Human
Mitochondrial DNA

19.00-19.20 Virtual



Kurt Zimmerman, Ph.D.
Assistant Professor, Department of Internal
Medicine, Division of Nephrology, University
of Oklahoma Health Sciences Center,
Oklahoma City, OK

A Single Cell Immune Atlas Reveals the Involvement of Adaptive
Immune Cells in Injury Mediated Cyst Progression

19.20-19.40 Virtual



Xiaoying Zhou, M.D., Ph.D.
Sean N. Parker Center for Allergy & Asthma
Research, Division of Pulmonary, Allergy,
and Critical Care Medicine, Stanford
University, CA

Mass Cytometry Reveals Distinct Immune Cell Populations
Associated with Food Allergy

Poster Presentations

19.40-19.50 Virtual



Stephanie Wojtowicz
Western University, Canada

Characterizing How DHPs Inhibit Transforming Growth
Factor Beta Signalling

19.50-20.00 Virtual



Charles Trelford
Western University, Canada

The Relationship Between TGF β and Autophagy in Non-small
Cell Lung Cancer

End of Day-3



8105, Rasor Blvd - Suite #112 PLANO, TX 75024, USA

Ph: +1-469-854-2280/81; **Toll Free:** +1-844-395-4102; **Fax:** +1-469-854-2278

Email: organizer@cebconference.com

Web: <https://cellexpbiol.unitedscientificgroup.org/>

Last minute changes due to functional, private, or organizational needs can be necessary.
Program is subject to change.